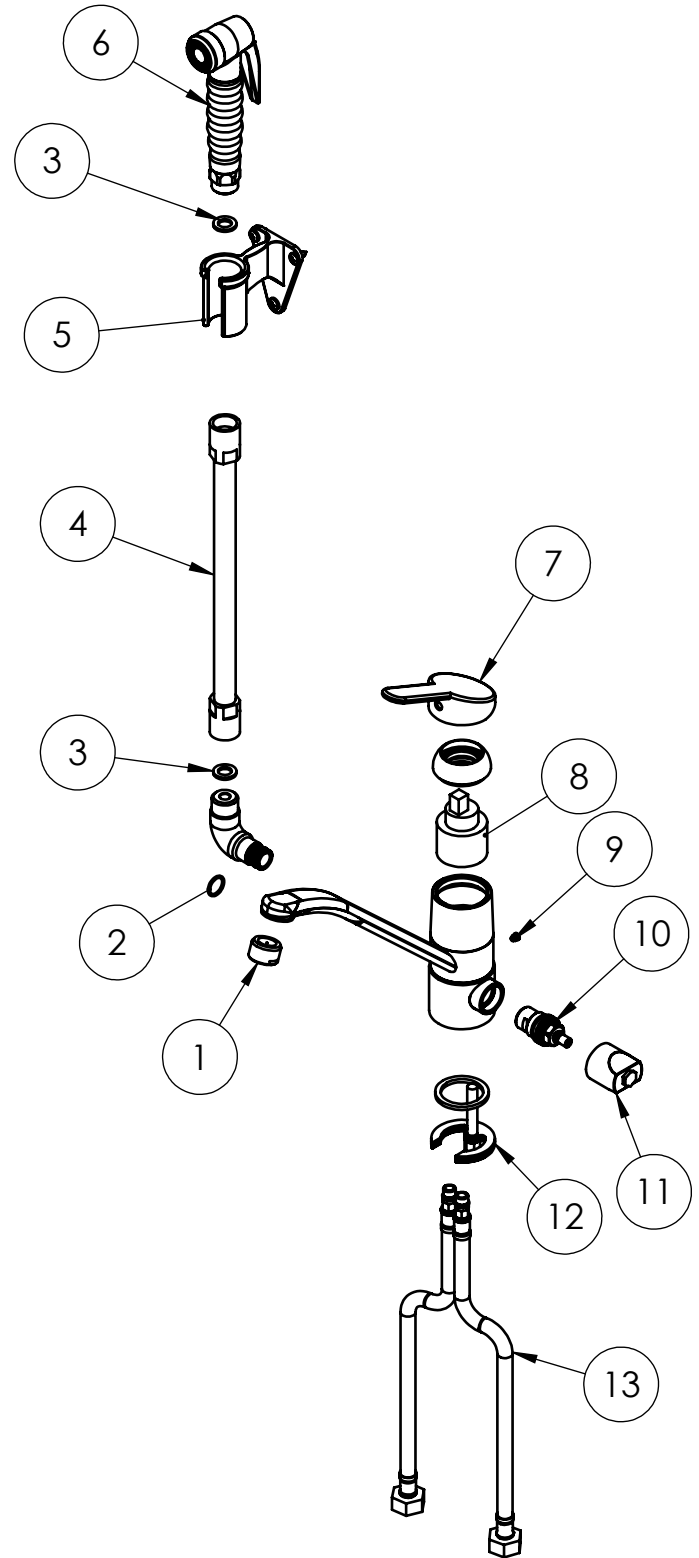


# EXPLOSIONSZEICHNUNG



KBS Gastrotechnik GmbH – Schoßbergstraße 26 – 65201 Wiesbaden

ITEM NO.	SALES NO.	DESCRIPTION
1	P065	FLOW REGULATOR M24x1
2	P097	O-RING 2056 (Ø14x1.78), EPDM70 PEROX
3	P074	FLAT GASKET 1/2" Ø18,5x11 sp.2mm
4	P004	100cm Ø17 F1/2"xF1/2" FLEXIBLE HOSE
5	P040	Plastic Wall Support
6	P042	Spray Valve "ECO/F" with Lever (Black)
7	H043	SHORT CHROME LEVER
8	VOA0	CARTRIDGE Ø40mm FLAT BOTTOM (Roub.Douchette)
9	P236	SPOUT SCREW (short)
10	V040/D	1/2" CERAMIC HEADWORK (RH)
11	H010	DIVERTER KNOB
12	P068	FIXING KIT (2920-2962)
13	F011	L.35cm Flex S.S. Hose Ø12-DN8 Female G1/2" (C)



TITLE / DESCRIZIONE

Single hole, deck-mount mixing Pre-Rinse unit with single lever, embended swivel nozzle, switch for spray valve/ nozzle. Flexible stainless steel hose for pre rinse spray valve. G1/2" female inlets, ceramic cartridge, brass, chrome plated

DRN / DIS

CHD / VER

APPR

SCALE /  
SCALA 1:6

DATE /  
DATA 10/07/2020

SHEET /  
PAG 2 of 2

This drawing contains proprietary information which is the property of KLARCO S.R.L. without whose written permission it may not be copied, shown or handed to a third party or otherwise used

Questo disegno contiene informazioni di proprietà di KLARCO S.R.L. e senza la sua autorizzazione scritta non può essere copiato, mostrato o ceduto a terzi o in qualsiasi altro modo usato

NUMBER / CODICE DIS.

MODEL / PRODOTTO  
1S.2920.42.8847

A4V