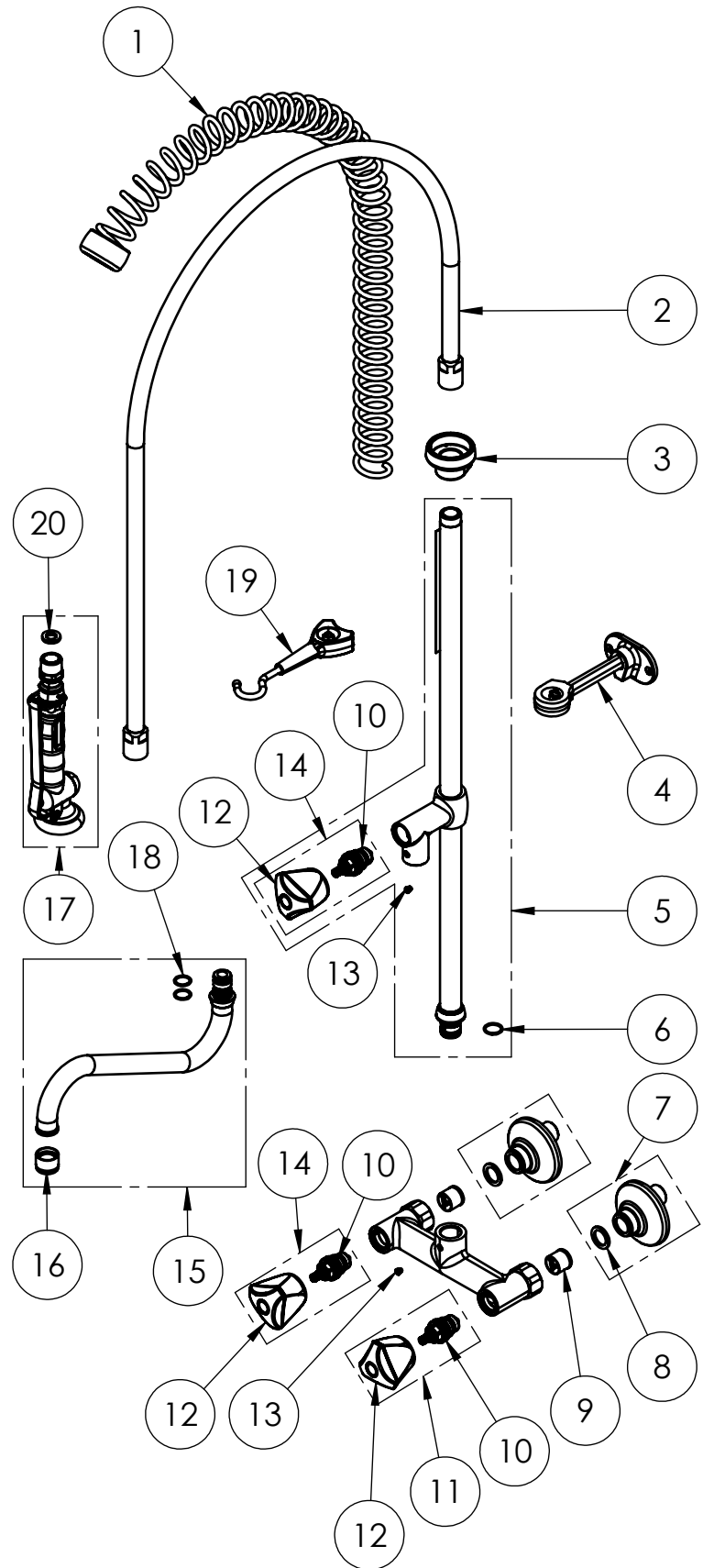


# EXPLOSIONSZEICHNUNG



KBS Gastrotechnik GmbH – Schoßbergstraße 26 – 65201 Wiesbaden

ITEM NO.	SALES NO.	DESCRIPTION
1	P005	GRAY OVERHEAD SPRING
2	P664	L.110cm F1/2"xF1/2" FLEXIBLE HOSE
3	P090	SPRING SUPPORT
4	P092	Wall Bracket L.115mm (BLACK)
5	P266/S3	650mm G1/2" RISER WITH O-RING
6	P076	O-RING 2062 (Ø15.6x1.78), EPDM 70 PEROX
7	P087	G1/2" MALE ECCENTRIC FLANGE
8	P107	FLAT GASKET 3/4" Ø24x17sp.2mm
9	P031	CHECK VALVE DW20-DN15
10	VS0	G1/2" COMPRESSION HEADWORK
11	V0S3/B	COMPLETE HANDLE WITH BLUE CODED INDEX + HEADWORK KIT
12	H033	"3Pe" HANDLE W. COLOR CODED INDEX (specify the color B or R)
13	P236	SPOUT SCREW (short)
14	V0S3/R	COMPLETE HANDLE WITH RED CODED INDEX + HEADWORK KIT
15	C0S1	SWING NOZZLE Ø20x250x70
16	P015	STREAM REGULATOR (Ø20 SPOUT)
17	P499/N	SPRAY VALVE "BEST PRO" BLACK
18	P097	O-RING 2056 (Ø14x1.78), EPDM70 PEROX
19	P091	SPRAY VALVE HOOK (BLACK)
20	P610	GASKET 1/2" Ø18,5x11 sp.3mm, FASIT OMNIA



**PRODUCT COMPLIANCE:**

ROHS 2011/65/UE;  
REACH 1907/2006;  
DVGW Hygiene

TITLE / DESCRIZIONE  
Wall-mount Pre-Rinse Unit. Chrome plated brass double hole(135-175mm adjustable center distance); G1/2" male inlets with check valves; G1/2" compression ceramic headworks; G1/2" turn ceramic headwork; stainless steel riser tube; 14l/min KLARCO "BEST PRO"spray valve.

DRN / DIS

E.Artini

CHD / VER

APPR

SCALE / SCALA

1:7

DATE / DATA

06/12/22

SHEET / PAG

2 of 2

This drawing contains proprietary information which is the property of KLARCO S.R.L. without whose written permission it may not be copied, shown or handed to a third party or otherwise used

Questo disegno contiene informazioni di proprietà di KLARCO S.R.L. e senza la sua autorizzazione scritta non può essere copiato, mostrato o ceduto a terzi o in qualsiasi altro modo usato

NUMBER / CODICE DIS.

MODEL / PRODOTTO

3S.4101.19N.S3

A4V